

# DIL ER, DIL R Industrial Control Relays

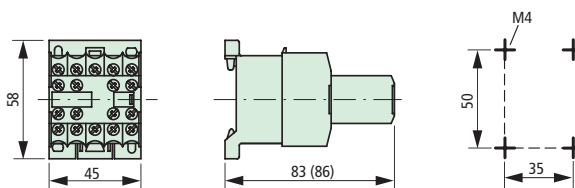
## Dimensions

### DIL ER control relays

DIL ER...(-C)  
DIL ER...-G(-C)



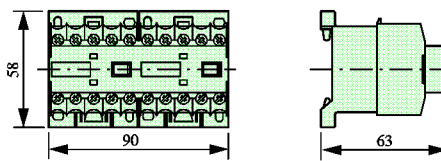
DIL ER...(-C) + ...DIL E(-C)  
DIL ER...-G(-C) + ...DIL E(-C)



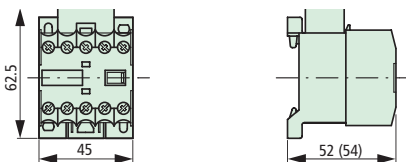
DIL ER... + H DIL E  
DIL ER...-G + H DIL E



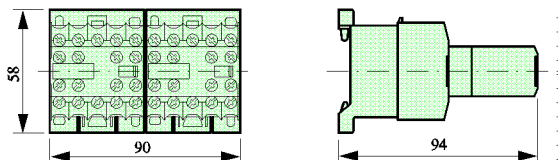
2 DIL ER... + MV DIL E  
2 DIL ER...-G + MV DIL E



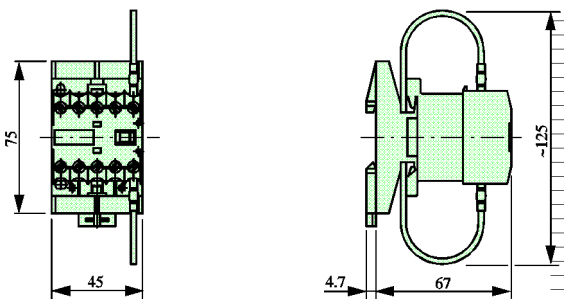
DIL ER...(-C) + RC DIL E(-C)  
DIL ER...-G(-C) + VG DIL E(-C)



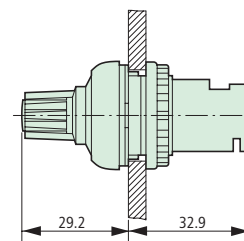
2 DIL ER... + MV DIL E + ...DIL E  
2 DIL ER...-G + MV DIL E + ...DIL E



DIL ER... + TD DIL E 24

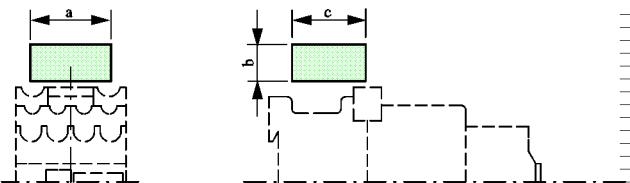


Potentiometer  
M22(S)-R10K



### Suppressors, Interface Modules

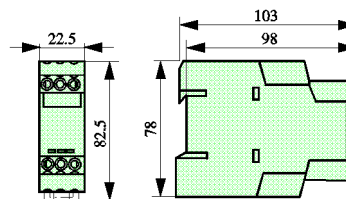
RC B DIL,  
FD B DIL  
VG B DIL  
VS 1(2) DIL



	RC B DIL	FD B DIL	VG B DIL	VS 1 DIL	VS 2 DIL
a	33	33	33	45	45
b	15	15	15	26	26
c	30	30	30	55	55

### Electronic Timing Relays

ETR 4-11...  
ETR 4-51...  
ETR 4-69...  
ETR 4-70...



# DIL R Control Relays, DIL ET, ETR 4 Electronic Timing Relays

## Dimensions

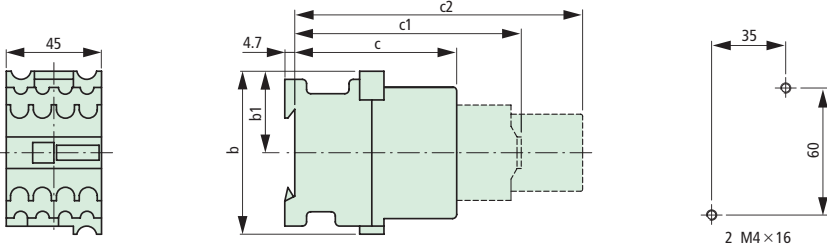
### Control Relays

DIL R 22(-G)  
DIL R 22D(-G)  
DIL R 31(-G)  
DIL R 40(-G)

DIL R 22(-G) + ...DIL  
DIL R 31(-G) + ...DIL  
DIL R 40(-G) + ...DIL  
DIL R 44D(-G)  
DIL R 53D(-G)

DIL R 22(-G) + TPE (TPD) 11 DIL  
DIL R 31(-G) + TPE (TPD) 11 DIL  
DIL R 40(-G) + TPE (TPD) 11 DIL

DIL R 22(-G) + V (-G) DIL  
DIL R 31(-G) + V (-G) DIL  
DIL R 40(-G) + V (-G) DIL



	DIL R ... DILR22D	-G -G	DIL R ...+...DIL DIL R 44D DIL R 53D	(-G) (-G) (-G)	DIL R ...+TPE11 DIL DIL R ...+TPD11 DIL	(-G) (-G)	DIL R...+V DIL	(-G) (-G) (-G)	DILR...-C	-G-C	DILR...-C+...DIL-C	-G-C
c (w H DIL)	76.5	101.5	-	-	-	-	-	-	-	-	-	-
c (w/o H DIL)	74	99	-	-	-	-	-	-	74	99	-	-
c1	-	-	107	132	-	-	-	-	-	-	107	132
c2	-	-	-	-	136	161	137	162	-	-	-	-
b	77	77	77	77	77	77	77	77	83	83	83	83
b1	38.5	38.5	38.5	38.5	38.5	38.5	38.5	38.5	41.5	41.5	41.5	41.5

c1 = with ...DIL auxiliary contact module or  
DIL R...D (-G) complete unit

c2 = with V (-G) DIL mechanical latching module or with TP...11  
DIL pneumatic timer module

### Electronic Timing Relays

DIL ET...

DIL ET... + H DIL E

