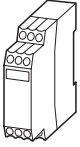
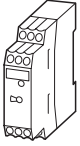



Thermistor Overload Relays

For protection of motors with P.T.C. thermistors embedded in their windings

	IEC rated operational current I_n at		UL/CSA Pilot duty rating	Rated operational voltage range U_s	Type	Price
	AC-15	AC-14			Article no.	See Price List
	220 V	380 V				
	230 V	400 V				
	240 V			V		
	A	A				
Thermistor overload relays for machine protection						
for use with P.T.C. (positive temperature coefficient) thermistors						
<ul style="list-style-type: none"> • With automatic reset • Power ON and fault indicating LED display 						
	3	3	B 300	24 – 240 V 50/60 Hz, 24 – 240 V DC	EMT6 066166	
<ul style="list-style-type: none"> • Selector switch with manual / automatic reset • For manual or remote resetting • Test button • Power ON and fault indicating LED display 						
	3	3	B 300	24 – 240 V 50/60 Hz, 24 – 240 V DC	EMT6-DB 066167	
<ul style="list-style-type: none"> • Multi-function device • Selector switch with manual / automatic reset • Short-circuit recognition in the sensor circuit • Reliable fault signalling even under supply voltage failure (Zero-voltage safety) • For manual or remote resetting • Test button • Short-circuit recognition and zero-voltage safety can be switched off • Power ON and fault indicating LED display 						
	3	3	B 300	24 – 240 V 50/60 Hz, 24 – 240 V DC	EMT6-DBK 066168	
Accessories						
Panel mount adapter						
<ul style="list-style-type: none"> • Without the adapter the EMT 6 is suitable for 35 mm DIN rail mounting only. The adapter enables the EMT 6 to become a panel mounted device using conventional screws. 						
					CS-TE 095853	

Thermistor Tripping Units

UL / CSA / IEC / CE

For protection of motors with P.T.C. thermistors embedded in their windings

Thermal Overload Relays,
Thermistor Tripping Units

Terminal marking to EN 50 005

Flow diagrams

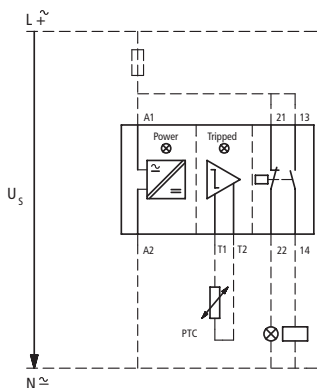
LED display

green Supply voltage is applied

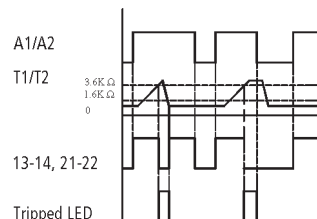
red Device has tripped

red Device has tripped/short circuit in sensor circuit

Notes



EMT6, EMT6-DB, EMT6-DBK Auto



Suitable for the protection of EEx e motors.
PTB certificate no. 3.53-14606/96

Can be snap mounted on an EN 50 022 35mm DIN rail

At $R_K \leq 250 \Omega$ per sensor: 6 sensors,
at $R_K \leq 100 \Omega$ per sensor: 9 sensors in the winding
(to be supplied by the user),
Maximum length of thermistor cable 250 m
(unscreened); total thermistor resistance $\Sigma R_K \leq 1500 \Omega$

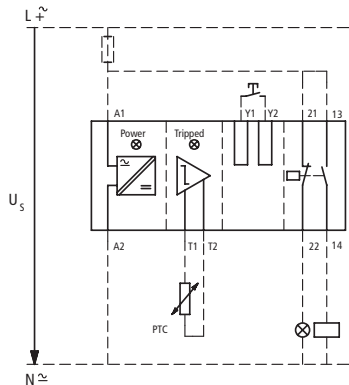
All the devices are also suitable for monitoring thermal contact sensors.

Characteristic values of sensor circuit at U_s and $+20^\circ C$

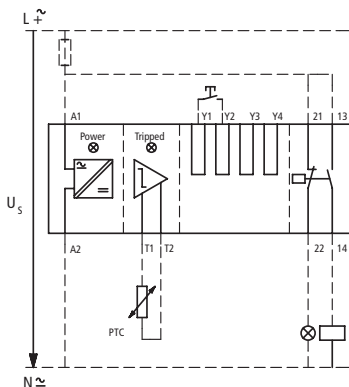
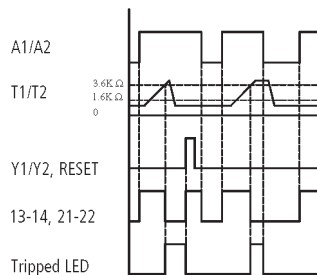
R_{T1-T2}	EMT6-...	
	U_{T1-T2} V DC max.	I_{T1-T2} mA max.
T1, T2 short-circuited	—	1.9
4 kΩ	3	0.8
T1-T2 open	5.1	—

Functions that can be disconnected on EMT6-DBK:

Function	Disconnection via jumper
Short-circuit recognition	$Y_1 - Y_3$
Zero-voltage safety	$Y_1 - Y_4$



EMT6-DB, EMT6-DBK Manual



EMT6-DBK Zero-voltage safe operation

